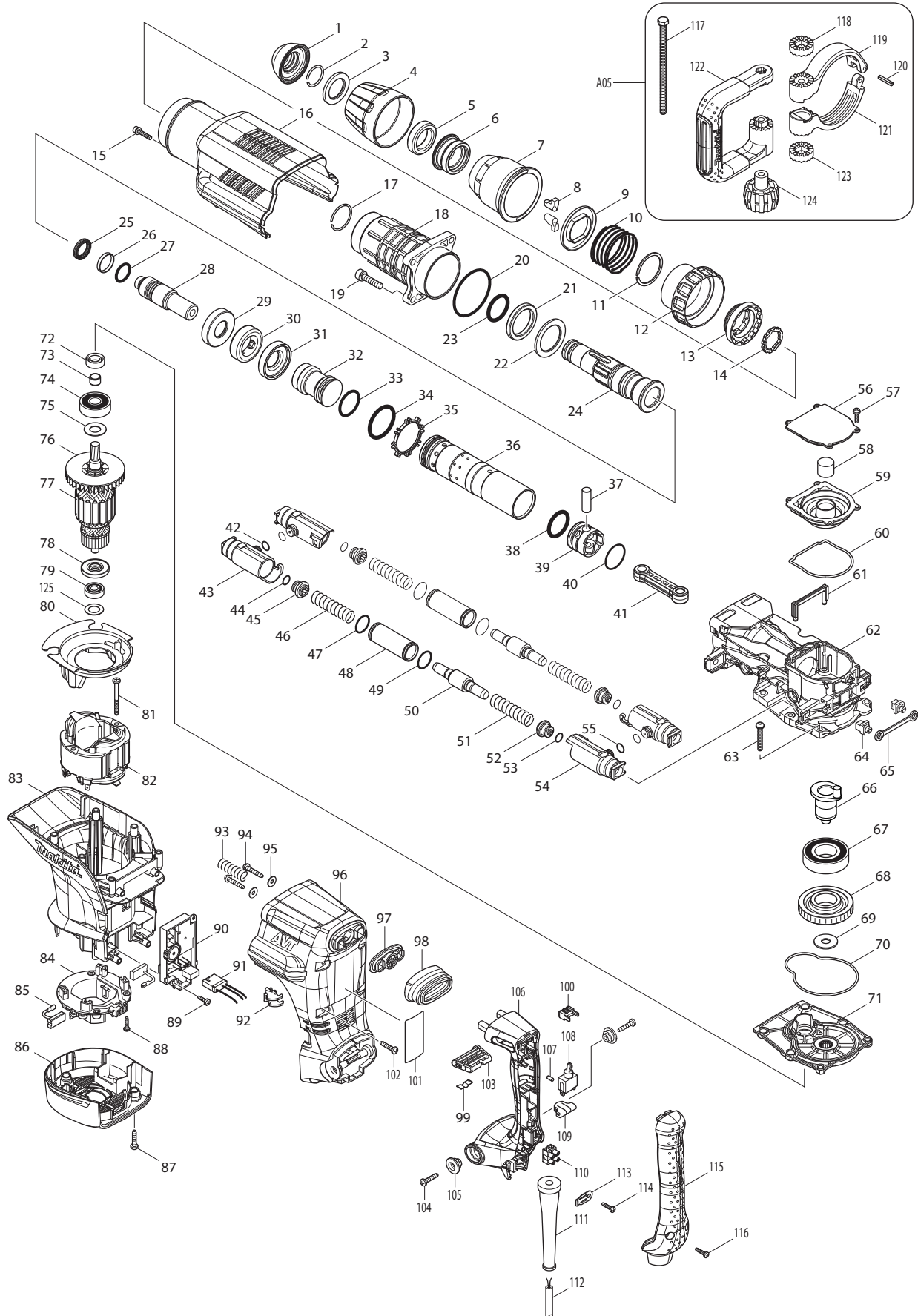




08 - 2010
HM1213C
23.8LB DEMOLITION HAMMER



PARTS LIST

Item No	Type	Part No	Description	Qty	Unit
001		424165-8	TOOL HOLDER CAP	1	PC.
002		233973-4	RING SPRING 26	1	PC.
003		267386-7	FLAT WASHER 30	1	PC.
004		450894-7	CHUCK COVER	1	PC.
005		262147-0	RUBBER RING 30	1	PC.
006		324987-5	CHUCK RING	1	PC.
007		450895-5	RELEASE COVER	1	PC.
008		310279-8	TOOL RETAINER	2	PC.
009		346015-6	SPRING GUIDE	1	PC.
010		234086-4	COMPRESSION SPRING 56	1	PC.
011		961232-3	RETAINING RING WR-45	1	PC.
012		450893-9	CHANGE RING COVER	1	PC.
013		324969-7	CHANGE RING	1	PC.
014		324988-3	LOCK RING	1	PC.
015		922243-3	HEX. SOCKET HEAD BOLT M5X25	1	PC.
016		450902-4	HOUSING COVER	1	PC.
017		233970-0	RING SPRING 35	1	PC.
018		158858-2	BARREL COMPLETE	1	PC.
019		922456-6	HEX. SOCKET HEAD BOLT M8X35	4	PC.
020		213720-9	O RING 67	1	PC.
021		262148-8	RUBBER RING 39	1	PC.
022		267387-5	FLAT WASHER 39	1	PC.
023		213079-4	O-RING 35.5	1	PC.
024		324985-9	TOOL HOLDER	1	PC.
025		213980-3	X-RING 21	1	PC.
026		213431-6	FLUORIDE RING 28	1	PC.
027		213394-6	O RING 23	1	PC.
028		324990-6	IMPACT BOLT	1	PC.
029		324993-0	SHOULDER SLEEVE	1	PC.
030		262149-6	RUBBER RING 24	1	PC.
031		324993-0	SHOULDER SLEEVE	1	PC.
032	2	326002-1	STRIKER	1	PC.
033		213499-2	O-RING 31.5	1	PC.
034		213581-7	O-RING 44	1	PC.
035		450889-0	ONE WAY VALVE GUIDE	1	PC.
036	2	331925-0	CYLINDER 40	1	PC.
037		268121-6	PIN 12	1	PC.
038		213499-2	O-RING 31.5	1	PC.

Item No	Type	Part No	Description	Qty	Unit
039		450961-8	PISTON	1	PC.
040		213149-9	O RING 35	1	PC.
041		450890-5	CONNECTING ROD	1	PC.
042		213118-0	O RING 12	2	PC.
043		318361-7	PIPE HOLDER	2	PC.
044		213118-0	O RING 12	2	PC.
045		419773-8	SPRING GUIDE	2	PC.
046		234085-6	COMPRESSION SPRING 15	2	PC.
047		213953-6	O RING 24	2	PC.
048		331745-2	PIPE 22	2	PC.
049		213953-6	O RING 24	2	PC.
050		324992-2	COUNTER WEIGHT	2	PC.
051		234085-6	COMPRESSION SPRING 15	2	PC.
052		419773-8	SPRING GUIDE	2	PC.
053		213118-0	O RING 12	2	PC.
054		318361-7	PIPE HOLDER	2	PC.
055		213118-0	O RING 12	2	PC.
056		450899-7	CRANK CAP COVER	1	PC.
057		911133-5	PAN HEAD SCREW M4X18	4	PC.
058		443127-7	FILTER	1	PC.
059		450898-9	CRANK CAP	1	PC.
060		424166-6	SEAL RING	1	PC.
061		450892-1	AIR PIPE	1	PC.
062		318363-3	CRANK HOUSING	1	PC.
063		266482-8	H.S.BOTTON HEAD SCREW M6X40	6	PC.
064		419008-7	FIX GUIDE	2	PC.
065		423366-5	CUSHION PLATE	1	PC.
066		324994-8	CRANK SHAFT	1	PC.
067		211424-7	BALL BEARING 6206LLU	1	PC.
068		226691-1	HELICAL GEAR 57	1	PC.
069		267398-0	FLAT WASHER 12	1	PC.
070		424167-4	SEAL RING	1	PC.
071		158859-0	GEAR HOUSING COMPLETE	1	PC.
072		213231-4	OIL SEAL 15	1	PC.
073		331596-3	SLEEVE 12	1	PC.
074		211249-9	BALL BEARING 6302LLU	1	PC.
075		267397-2	FLAT WASHER 15	1	PC.
076		240003-4	ARMATURE FAN 80 - Removed	1	PC.
077		517816-1	ARMATURE ASSEMBLY 115V	1	PC.

Item No	Type	Part No	Description	Qty	Unit
077		INC.	Item No. 73, 74, 75, 76, 78, 79	1	PC.
078		681642-5	INSULATION WASHER	1	PC.
079	2	211289-7	BALL BEARING 6000DDW	1	PC
080		450900-8	BAFFLE PLATE	1	PC.
081		266095-5	TAPPING SCREW 5X55	2	PC.
082		636301-6	FIELD 115V	1	PC.
083		450904-0	MOTOR HOUSING	1	PC.
084	2	632D00-2	BRUSH HOLDER UNIT	1	PC.
085	3	195845-0	CARBON BRUSH CB-175 2PC/SET (W/ ORIGIN)	1	SET
085	4	195844-2	CARBON BRUSH CB-175 2PC/SET (W/ ORIGIN)	1	SET
086		450901-6	REAR COVER	1	PC.
087		266041-8	TAPPING SCREW 5X25	3	PC.
088		265995-6	TAPPING SCREW 4X18	4	PC.
089	3	265678-8	TAPPING SCREW 4X18	2	PC.
090		631893-0	CONTROLLER	1	PC.
091		638650-7	LEAD UNIT	1	PC.
092		419010-0	LENS	1	PC.
093		233434-4	COMPRESSION SPRING 11	1	PC.
094		266173-1	TAPPING SCREW 5X30	2	PC.
095		253807-5	FLAT WASHER 5	2	PC.
096		450905-8	HANDLE BASE	1	PC.
097		419783-5	DUST COVER SUPPORT	1	PC.
098		424001-8	DUST COVER	1	PC.
099		232209-8	LEAF SPRING	1	PC.
100		450891-3	LEVER STOPPER	1	PC.
101	2	814S58-5	NAME PLATE F/HM1213C	1	PC.
102		266041-8	TAPPING SCREW 5X25	6	PC.
103		450896-3	SLIDE LEVER	1	PC.
104		266041-8	TAPPING SCREW 5X25	2	PC.
105	2	450352-3	SHOULDER SLEEVE 6	2	PC.
106		450906-6	HANDLE	1	PC.
107		263027-3	RUBBER PIN 4	1	PC.
108		651423-1	SWITCH, SINGLE	1	PC.
109		423379-6	SPONGE SHEET	1	PC.
110		654531-7	TERMINAL BLOCK 2P	1	PC.
111		682560-0	CORD GUARD 10	1	PC.
112		664471-1	CORD W/PLUG 2P-14-5.0M, SJ	1	PC.
113		687169-3	STRAIN RELIEF	1	PC.
114		265995-6	TAPPING SCREW 4X18	1	PC.

Item No	Type	Part No	Description	Qty	Unit
115		450908-2	HANDLE COVER	1	PC.
116		265995-6	TAPPING SCREW 4X18	2	PC.
117		265439-6	HEX. BOLT M8X150	1	PC.
118		417002-3	SIDE HANDLE CAM	1	PC.
119		318505-9	SIDE HANDLE BASE 82A	1	PC.
120		951166-8	SPRING PIN 5-24	1	PC.
121		318506-7	SIDE HANDLE BASE 82B	1	PC.
122		417003-1	SIDE HANDLE	1	PC.
123		417002-3	SIDE HANDLE CAM	1	PC.
124		252640-2	WING NUT M8	1	PC.
125		267164-5	FLAT WASHER 15	1	PC.
200		652008-6	PAN HEAD SCREW M3.5X7 (F/SWITCH)	2	PC.
A01		751423-A	SDS-MAX BULL POINT 12"	1	PC.
A01	2	D-36463	SDS-MAX BULL POINT 12"	1	PC.
A02	2	194683-7	GREASE VESSEL SET, 100CC, PUMP TYPE, FOR BIT	1	PC.
A03		443122-7	CLOTH	1	PC.
A04		824908-2	PLASTIC CARRRYING CASE	1	PC.
A04	INC.	162271-8	LATCH	2	PC.
A04	INC.	325637-5	SHAFT	1	PC.
A04	INC.	450990-1	HANDLE	1	PC.
A05		135269-8	SIDE HANDLE 82 ASS'Y (D-shape)	1	PC.
A05	INC.		Item No. 117-124	1	PC.
A06		195114-9	HAMMER SERVICE KIT	1	PC.
A06	INC.	213431-6	FLUORIDE RING 28	1	PC.
A06	INC.	195845-0	CARBON BRUSH CB-175 2PC/SET (W/ ORIGIN)	1	SET
A06	INC.	262149-6	RUBBER RING 24	1	PC.
A06	INC.	213079-4	O RING 35.5	1	PC.
A06	INC.	213499-2	O RING 31.5	2	PC.
A06	INC.	213149-9	O RING 35	1	PC.
A06	INC.	424165-8	TOOL HOLDER CAP	1	PC.
A06	INC.	213980-3	X RING 21	1	PC.
A06	INC.	213394-6	O RING 23	1	PC.
A06	INC.	262148-8	RUBBER RING 39	1	PC.
A06	INC.	A-90582	HAMMER GREASE 30CC (1OZ)	2	PC.
A07	INC.	454809-6	HOSE HOLDER C	1	PC.
A07	INC.	-----	Instruction Manual 30Language (N/A Individually)	1	PC.
A07	INC.	-----	PLASTIC CASE LABEL (N/A Individually)	1	PC.
A07	INC.	454750-3	HOSE HOLDER B	1	PC.
A07	INC.	454749-8	HOSE HOLDER A	1	PC.

Item No	Type	Part No	Description	Qty	Unit
A07		INC. 415021-3	HOSE JOINT	1	PC.
A07		INC. 142350-8	HOSE COMPLETE 28 - 1.5	1	PC.
A07		INC. -----	CARTON (Master) (N/A Individually)	1	PC.
A07	2	199019-5	DUST EXTRACTOR ATTACHMENT SET	1	PC.
A07	2	INC. 195545-2	FRONT CUFF 38 PKG (BULK# 417766-9)	1	PC.
A07	2	INC. 195547-8	FRONT CUFF 22	1	PC.